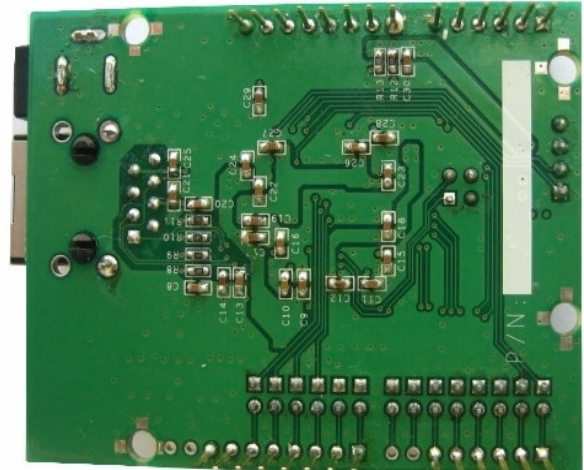


TP-ESMS-8 Board Front



TP-ESMS-8 Board Back

OVERVIEW

What can TP-ESMS-8 Board do for you?

TOPOINT TP-ESMS-8 Board (Arduino-Compatible) works with Arduino board (for instance, Uno, Due series) cooperatively and is equipped with 8 digital inputs (D/I). Whenever any one of 8 D/I has been triggered, it is able to send:

1. **Email notification**
2. **Short Message (SMS)**

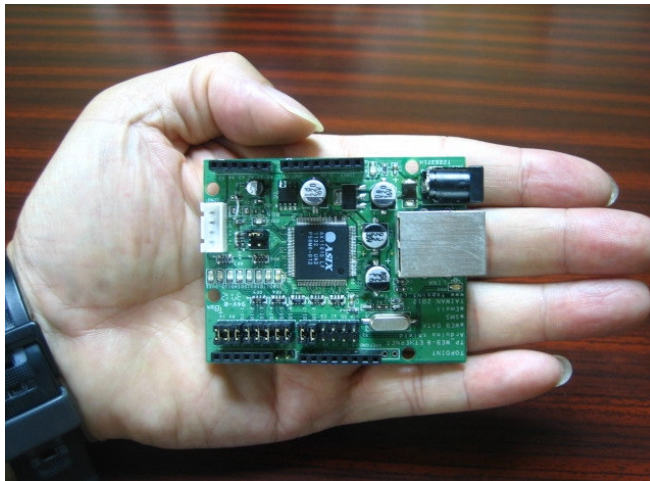
The content of Email notification and Short Message (SMS) can be configured on the application software (TP-ESMS-8.exe, as provided by TOPOINT CORP). Furthermore, user is able to view, on the web-enabled browser, most updated 8 D/I status and ASCII data that are received from UART interface on the real-time basis

No troublesome programming is required, no SIM card is needed.

In short, with TP_ESMS_8 board, you can easily design your own auto Email/ Short Message (SMS) sender, and view internal data thru the web browser.

FEATURES

- ⊕ 100% compatible with Arduino board pin layout, screw holes & dimension
- ⊕ Operates on voltage 5VDC (supplied from Arduino board)
- ⊕ View 8 D/I status and ASCII data that are received from UART
- ⊕ RJ45 connection speed: 10/100Mb
- ⊕ One-piece design & compact size
- ⊕ All pins out for D/I sensors
- ⊕ No programming required
- ⊕ Visible LED indicators
- ⊕ No SIM card required



TP-ESMS-8 Board comes in compact size—only in the half size of the palm



TP-ESMS-8 Board is stacked on Top of Arduino Uno Rev2

CONFIGURATION

- ⊕ D11: D/I 1
- ⊕ D12: D/I 2
- ⊕ D13: D/I 3
- ⊕ D14: D/I 4
- ⊕ D15: D/I 5
- ⊕ D16: D/I 6
- ⊕ D17: D/I 7
- ⊕ D18: D/I 8
- ⊕ DX1: Ethernet. This indicates the presence of a RJ45 Ethernet
- ⊕ D3: Power. This indicates that the board and shield are powered
- ⊕ DX10: Run. This indicator pulses regularly in the stand-by mode and turns into intense pulses in the Email/SMS delivery mode.

