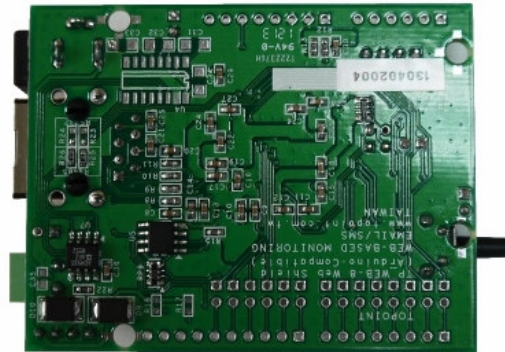


*TP-ESMS-1 front*



*TP-ESMS-1 back*

## OVERVIEW

### What can the TP-ESMS-1 Board do for you?

TOPOINT TP-ESMS-1 Board is a total standalone board unit that is equipped with 1 digital input (D/I). Whenever that D/I has been triggered, it is able to send:

1. **Email notification**
2. **Short Message (SMS)**

The contents and recipients of Email notification and Short Message (SMS) can be pre-edited on the application software (TP-ESMS-1.exe, as provided by TOPOINT CORP). No troublesome programming required, no SIM card is needed. No matter what happens in the distance where the TP-ESMS-1 has been installed, user is noted of events in mere seconds.

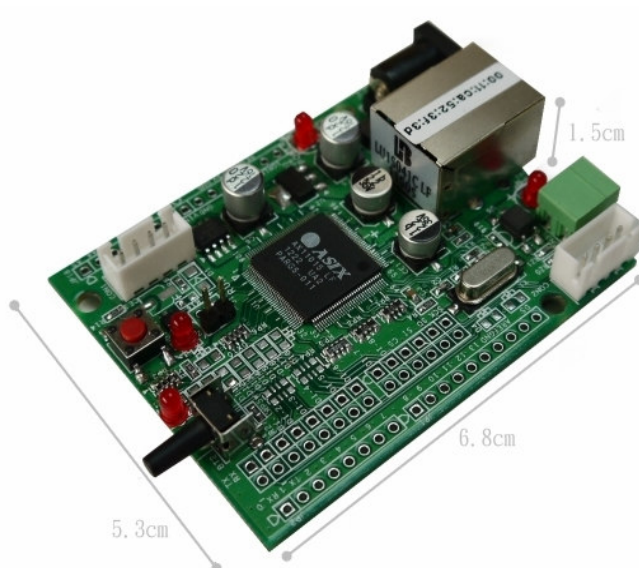
**With TP\_ESMS\_1 board, you can easily design your own auto Email/ Short Message (SMS) sender.**

## FEATURES

- ⊕ One-piece design & compact size (L6.8\*W5.3\*H1.5cm)
- ⊕ RJ45 connection speed: 10/100Mb
- ⊕ Total standalone board unit
- ⊕ Operates on voltage 5V DC
- ⊕ No programming needed
- ⊕ No SIM card required
- ⊕ Visible LED indicators
- ⊕ Bar of event reset

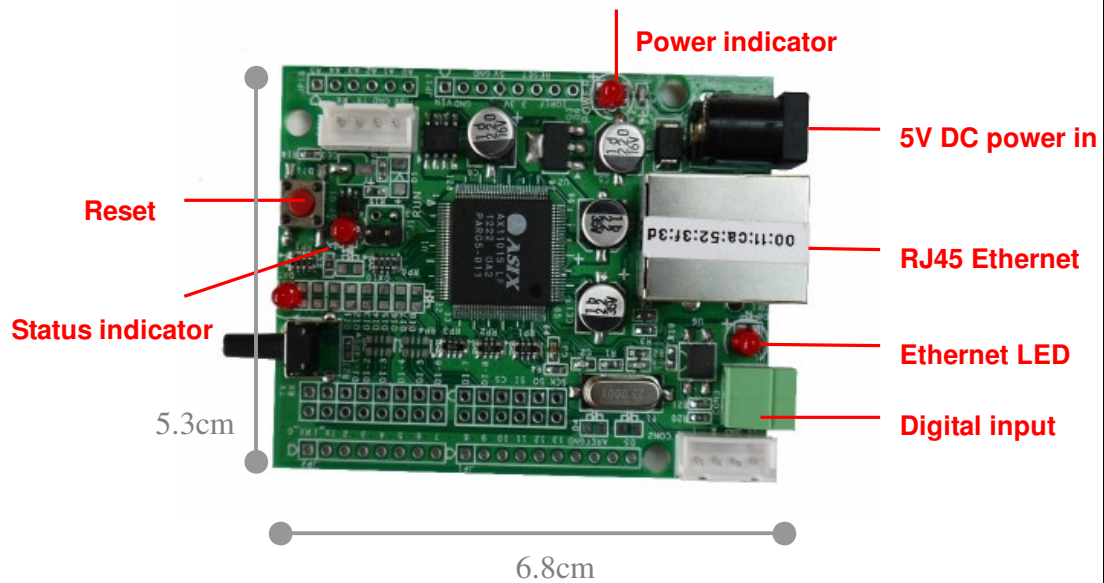


*TP-ESMS-1 Board comes in compact size—only in the half size of the palm*



*TP-ESMS-1 Board dimension is stated in cm*

## WIRING OF BOARD



### Note

Reset	Press this button to clear event trigger
Status indicator	The indicator pulses regularly in the stand-by mode and turns into intense pulses during the short period of Email/SMS delivery mode
Power indicator	The indicator remains on when the board unit is powered
Ethernet LED	The LED indicates the presence of Ethernet access. It turns into short intense flashes in an Email/SMS delivery mode.
Digital input (D/I)	This port connects with a sensor. The board unit responds on triggered signals (N/C or N/O)
5V DC power	The board unit runs on a 5V DC power
Power consumption	250mA
Board dimensions	6.8X5.3X1.5(cm; L/ W/ H)
Board weight	30g

## CONFIGURATION

